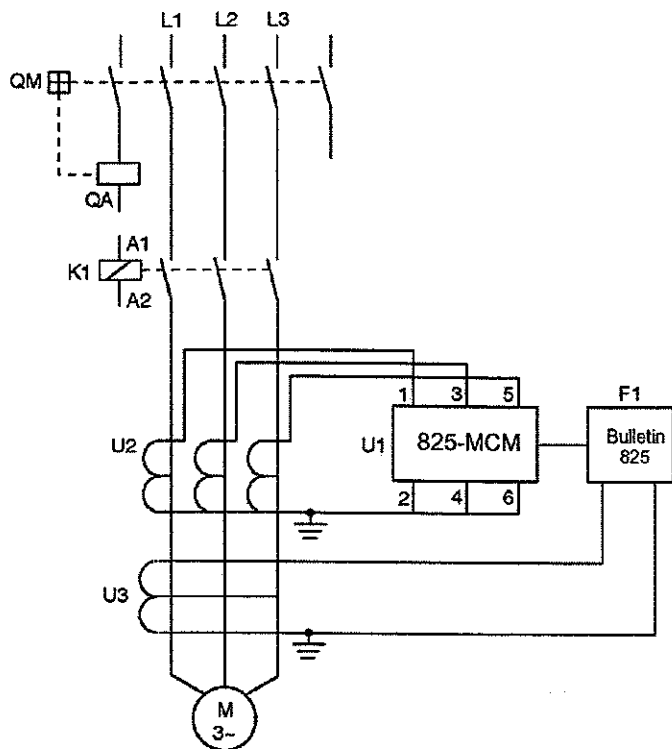


Short-Circuit Protection of Medium- and High-Voltage Motors with Option 825-MST

Main Circuit

3-phase current evaluation

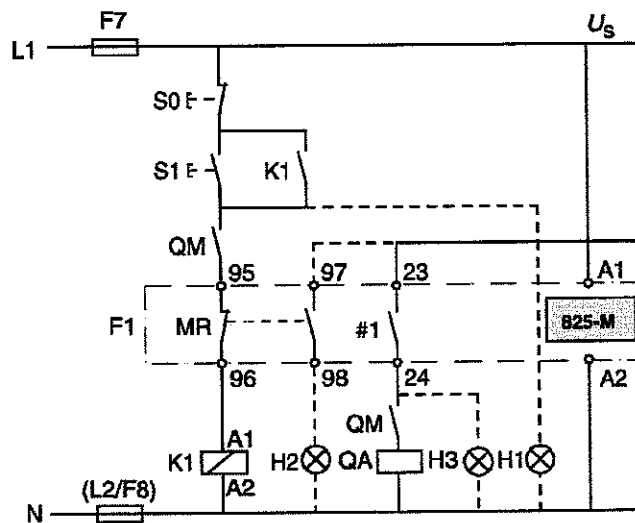


Cat. No 825-M for short-circuit protection
 Converter Module U1
 825-MCM2
 825-MCM20

Main current transformer U2. A/5 A or A/1 A
 See Specifications for selection

Core balance transformer U3
 5 mA...50 A
 Output to Bulletin 825-M: 5...500 mA

Control Circuit



Impulse contact control

- QM Circuit breaker
- QA Shunt trip coil
- K1 Contactor
- F1 825-M
- S1 ON button
- S0 OFF button
- Us Control voltage
- H1 Indicator: contact closed
- H2 Indicator: Bulletin 825 tripped
(except for short-circuit protection)
- H3 Indicator: short-circuit trip
- MR Main output relay
- #1 Auxiliary relay, short-circuit indicator